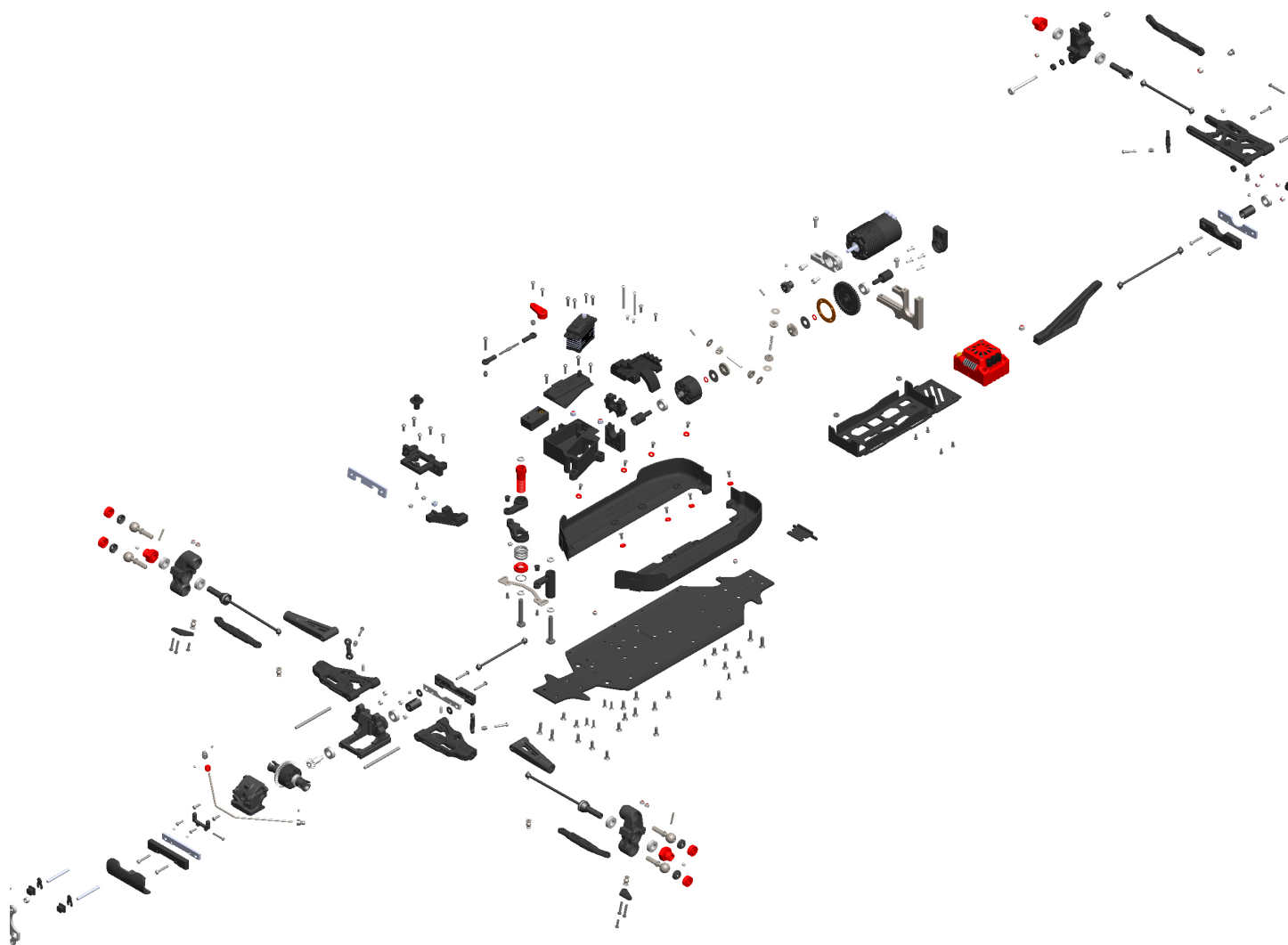




EXPLODED VIEWS

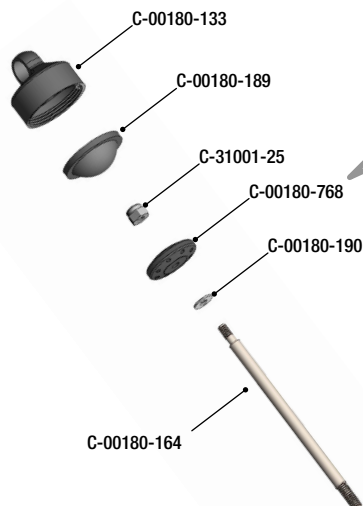
VUES ÉCLATÉES • EXPLOSIONSZEICHNUNGEN
• UITGEBREIDE ZICHTEN



SKETER **XP
4s**

SHOCK ABSORBER - AMORTISSEUR - STOSSDÄMPFER - SCHOKDEMPEL

- Do not overtighten the Shock Cap to prevent deformation of the silicone Shock Bladder.
- Ne serrez pas trop le capuchon de l'amortisseur pour éviter la déformation de la membrane en silicone.
- Ziehen Sie die Dämpferabdeckung nicht zu fest an, um eine Verformung der Silikonmembran zu vermeiden.
- Draai de schokkap niet te strak aan om vervorming van het siliconenmembraan te voorkomen.



C-00180-768 Shock Piston



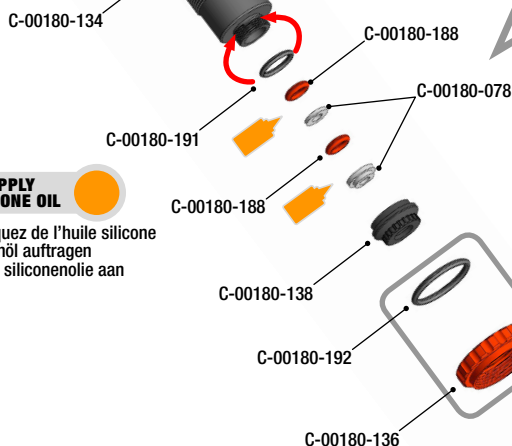
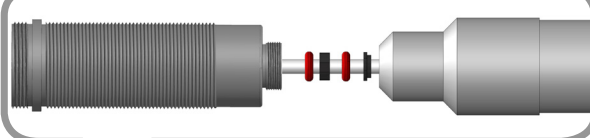
Set content (8PCS)

Shock Piston - 6x1.4

Shock Piston - 8x1.2



- Place all small parts on a screwdriver (Ø3mm) and push them into the shock body. All parts will be properly aligned.
- Placez toutes les petites pièces sur un tournevis (Ø3mm) et poussez-les dans le corps de l'amortisseur. Toutes les pièces seront correctement alignées.
- Setzen Sie alle Kleinteile auf einen Schraubendreher (Ø3mm) und drücken Sie sie in den Dämpferkörper. Alle Teile werden richtig ausgerichtet.
- Plaats alle kleine onderdelen op een schroevendraaier (Ø3mm) en duw ze in de behuizing van de schokdemper. Alle onderdelen zullen goed uitgelijnd zijn.

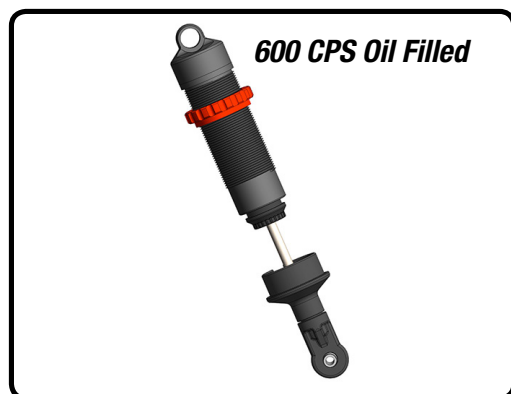


APPLY SILICONE OIL

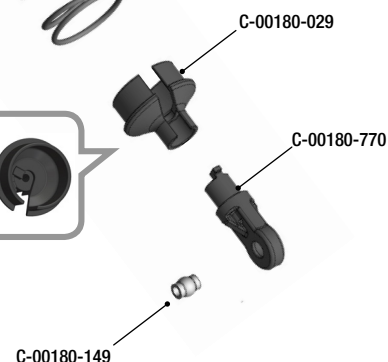
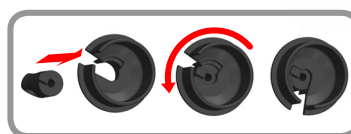
- Appliquez de l'huile silicone
- Silikonöl auftragen
- Breng siliconenolie aan



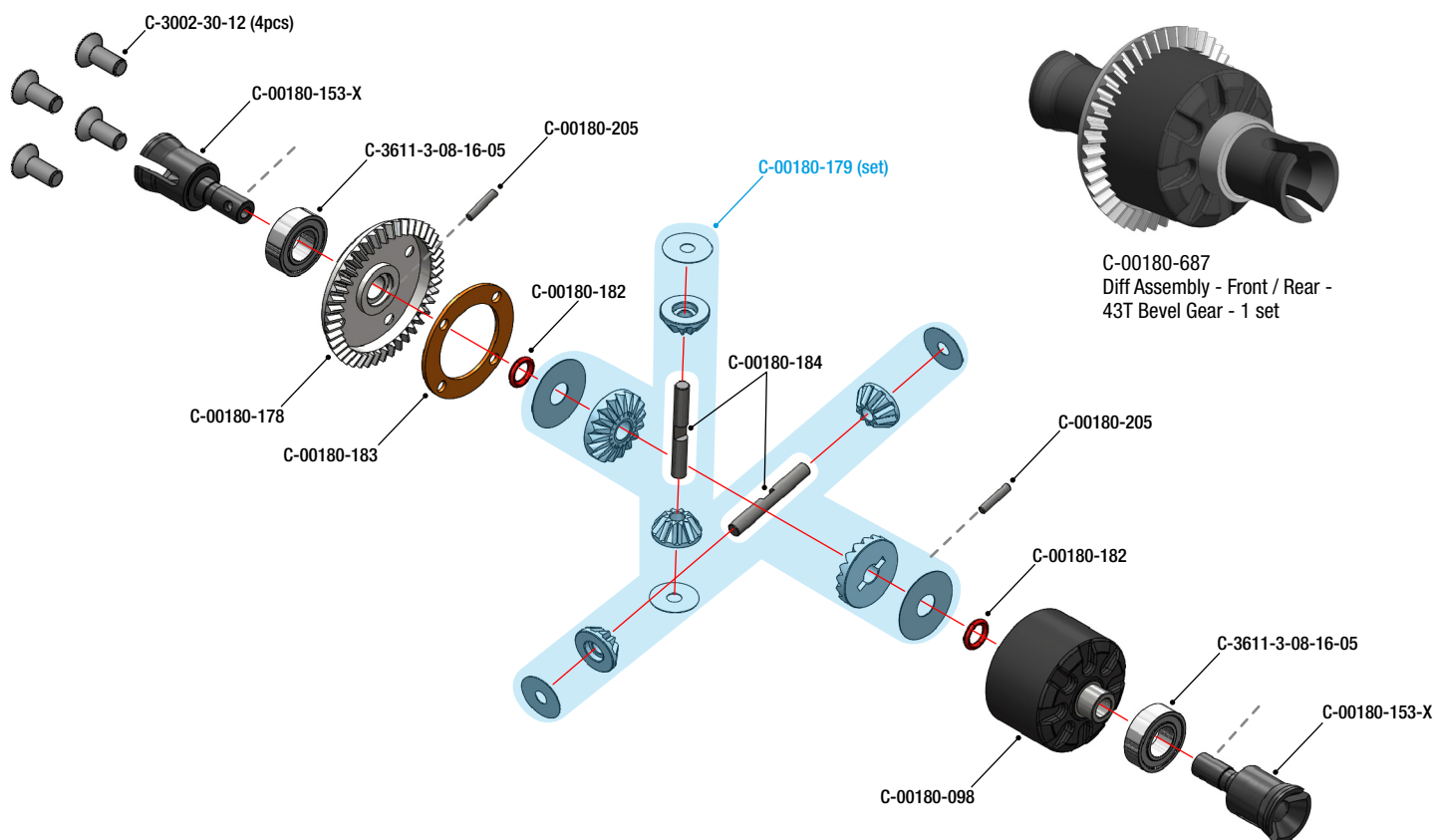
C-00180-286 - SOFT
C-00180-287 - MEDIUM (Factory)
C-00180-288 - HARD



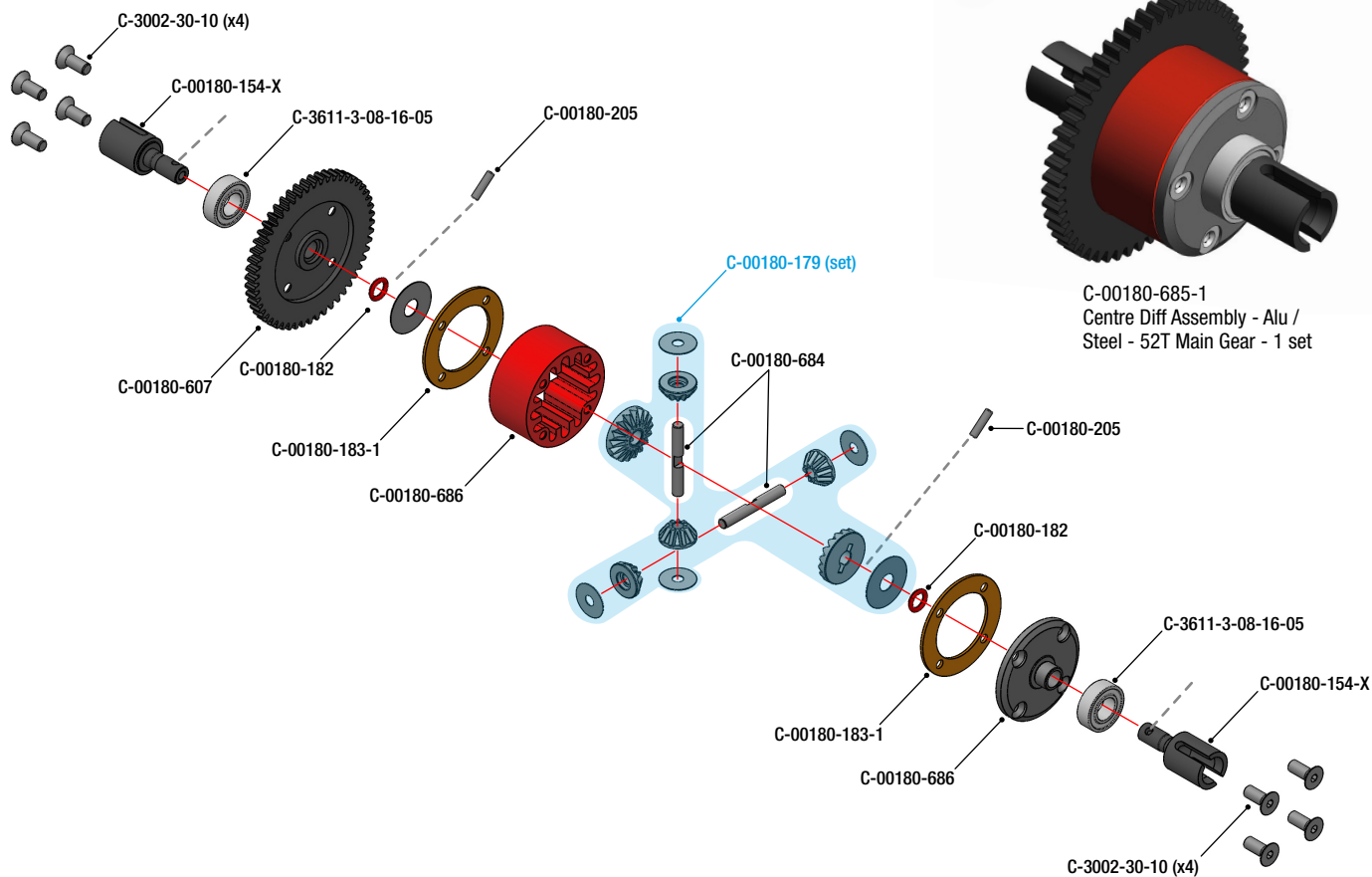
C-00180-134-1
Shock Absorber "Ready Build" - Long - No Spring - 1 pc

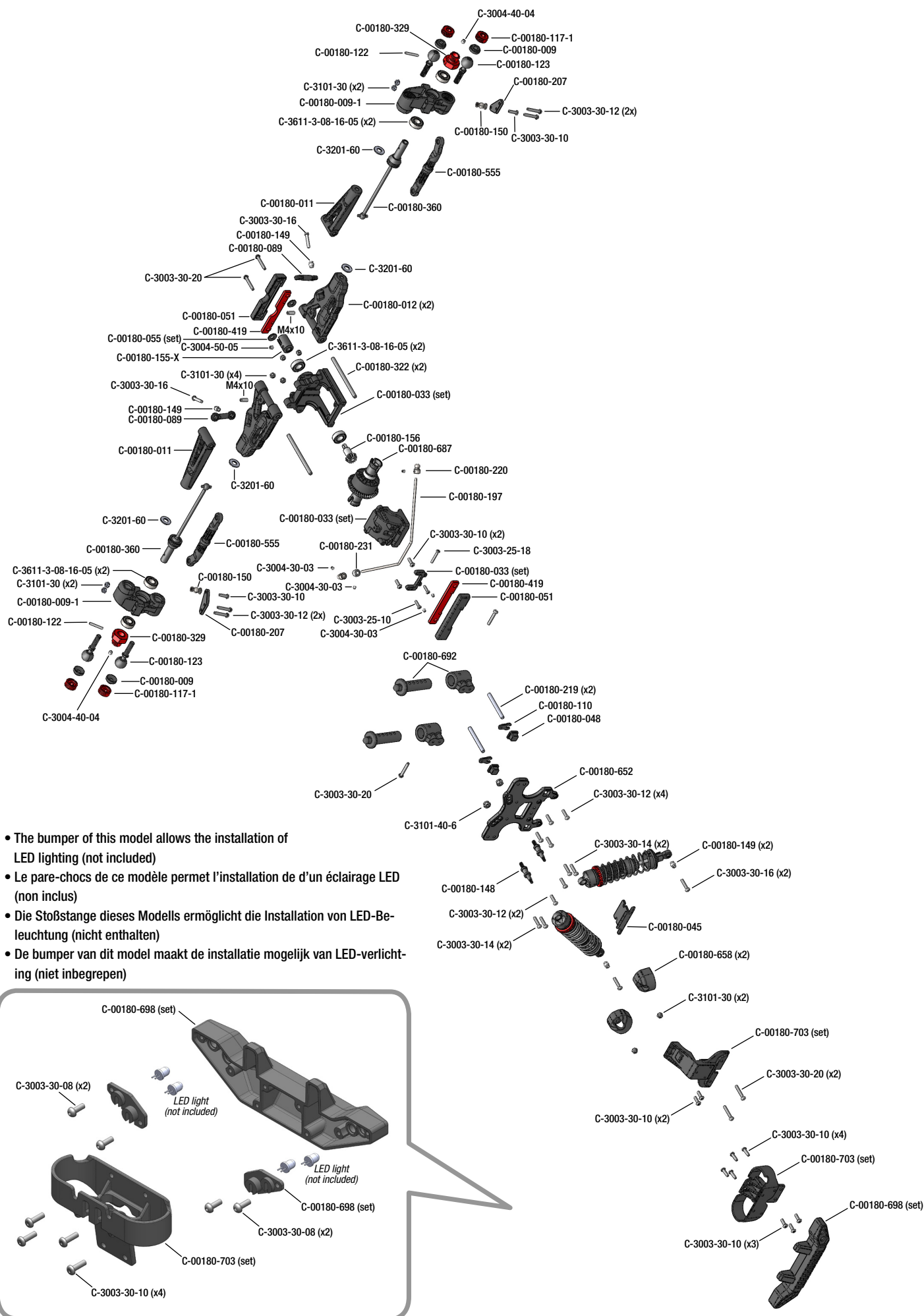


FRONT & REAR DIFFERENTIAL - DIFFÉRENTIEL AVANT ET ARRIÈRE - DIFFERENTIAL VORNE UND HINTEN - VOOR & ACHTER DIFFERENTIEEL

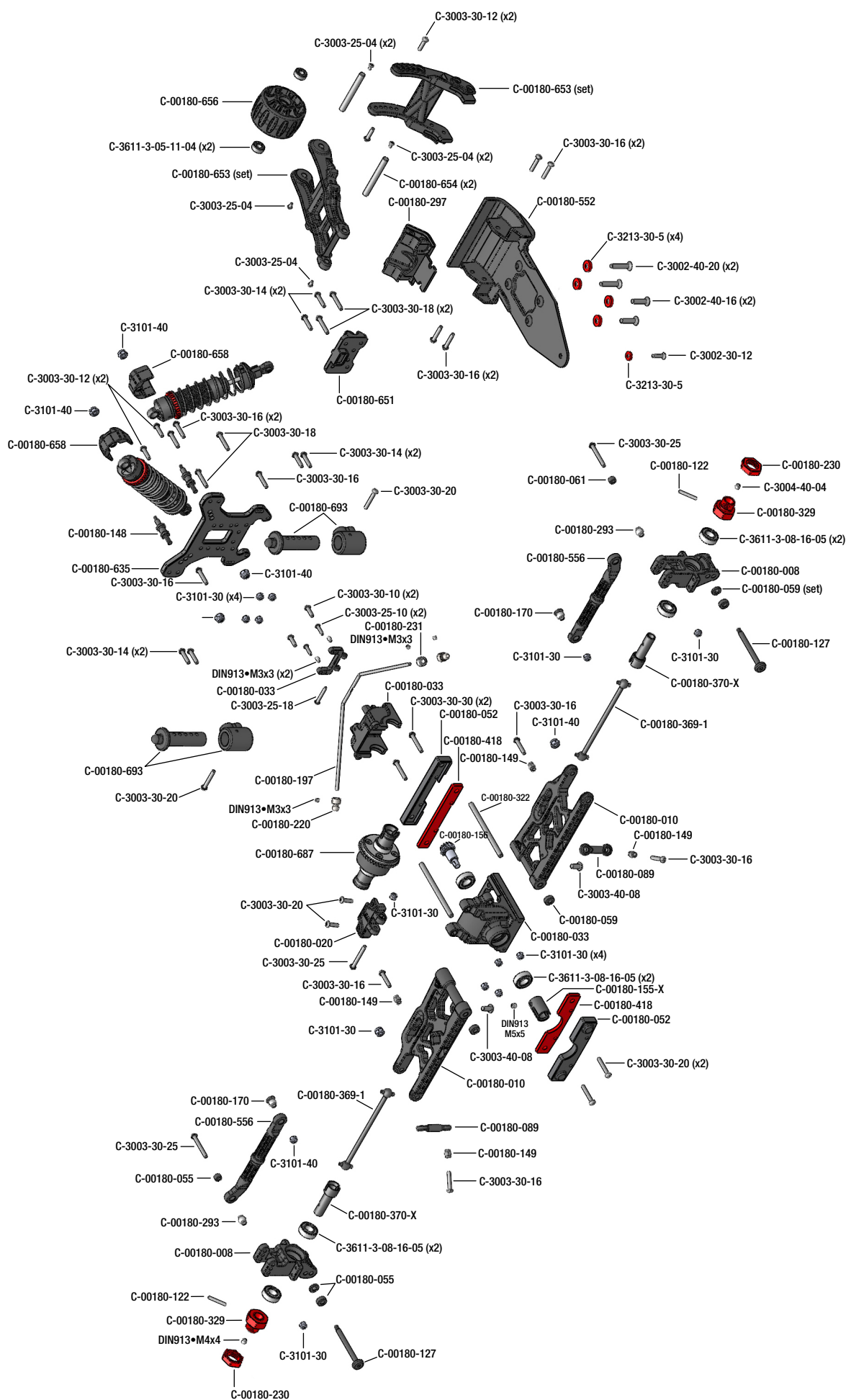


CENTRE DIFFERENTIAL - DIFFÉRENTIEL CENTRAL - ZENTRALDIFFERENTIAL - CENTERDIFFERENTIEEL

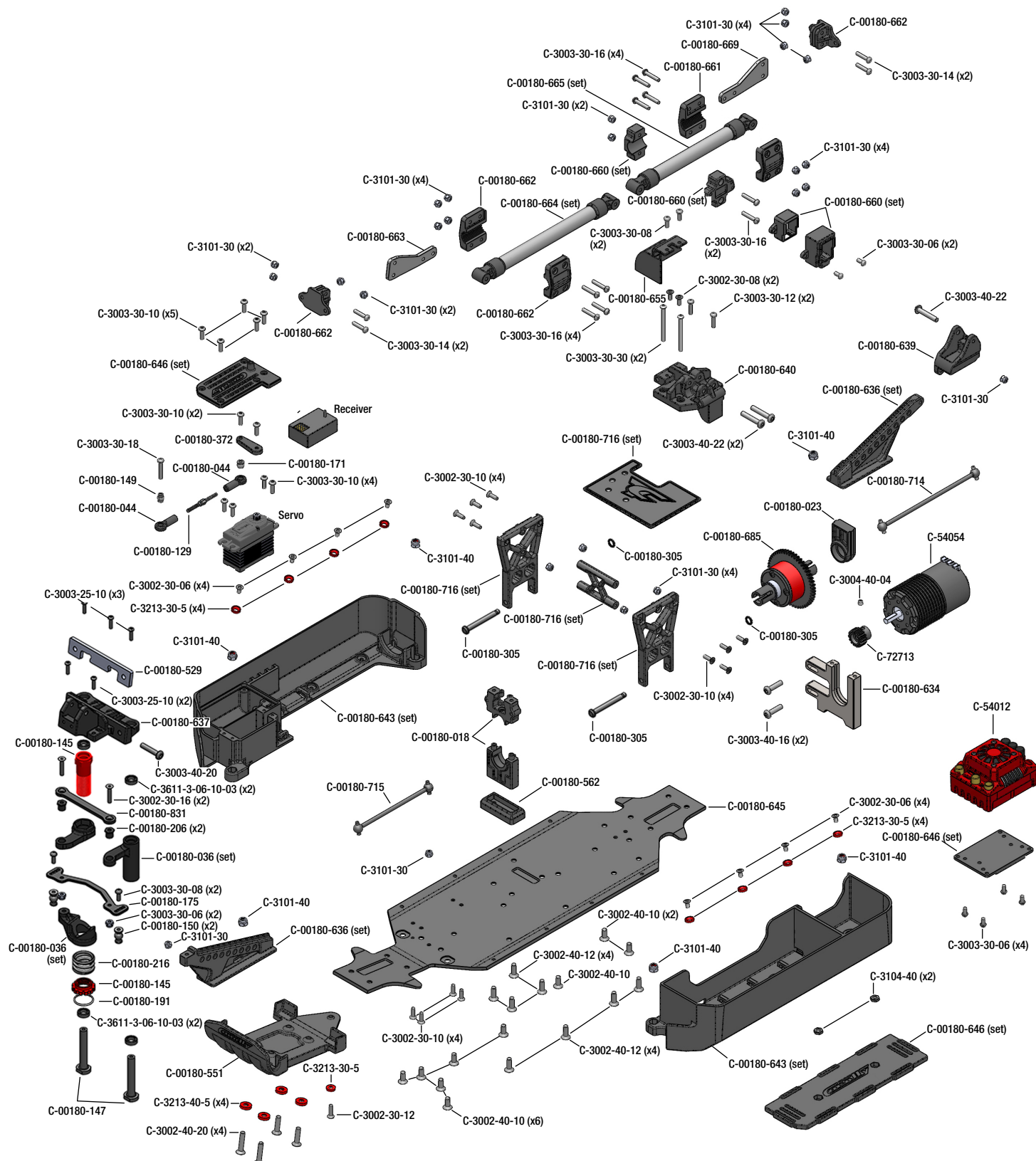









- The bumper of this model allows the installation of LED lighting (not included)
- Le pare-chocs de ce modèle permet l'installation de d'un éclairage LED (non inclus)
- Die Stoßstange dieses Modells ermöglicht die Installation von LED-Beleuchtung (nicht enthalten)
- De bumper van dit model maakt de installatie mogelijk van LED-verlichting (niet inbegrepen)



CHASSIS - EXPLODED VIEW • CHASSIS VUE ECLATEE • CHASSIS - EXPLOSIONSZEICHNUNG • CHASSIS - AANZICHT



CHASSIS - SCREWS DESCRIPTION • CHÂSSIS - DESCRIPTION DES VIS • CHASSIS - SCHRAUBEN BESCHREIBUNG • CHASSIS - SCHROEVEN BESCHRIJVING

-  **M3x12mm DIN7991**
#C-3002-30-12
-  **M4x10mm DIN7991**
#C-3002-40-10
-  **M4x12mm DIN7991**
#C-3002-40-12
-  **M4x16mm DIN7991**
#C-3002-40-16
-  **M4x20mm DIN7991**
#C-3002-40-20





WWW.CORALLY.COM

**Team Corally is a registered trademark licensed to
JSP Group Intl bvba • Geelseweg 80 • B-2250 OLEN • Belgium
Tel: +32 14 25 92 94 • Info@corally.com**